



PAREMATA SCHOOL NEWSLETTER
WEDNESDAY 16th OCTOBER 2024
NIUE LANGUAGE WEEK
WEEK 1 – TERM 4



www.paremata.school.nz
absent@paremata.school.nz

office@paremata.school.nz
afterschoolcare@paremata.school.nz

IMPORTANT INFORMATION

Monday 21 st October	Netball Prize Giving
Monday 21 st October	Junior Swimming Programme commences
Tuesday 5 th November	NE/Team Photos
Friday 15 th November	Teacher Only Day – School closed

Takaalofa lahi atu

Welcome to a very busy term 4. We hope you all had a great break and enjoyed the holidays despite the unsettled weather. A very warm welcome to all our new families who have started with us this term. We have Helen Sloane and Wendy Barry back with us covering staff leave and a very warm welcome to Finn Presswell who has started with the Learning Support team. We all hope you settle in well.

Staff News

As some of you are aware one of our teachers Jannien Kamphuis has been away from school unwell since the middle of last term. Sadly, Jannien is battling brain cancer and is currently going through an intensive round of treatment. We are in regular contact with Jannien and she is doing really well. If you would like to send Jannien any messages of support please e-mail Marie mariea@paremata.school.nz and we will pass these on. Thank you.

2025 Planning

Thank you to the families that have advised their children will be attending other schools next year. This really helps with planning for 2025. If your child/ren are leaving Paremata School at the end of the year (other than year 8s), can please email Marie in the office on mariea@paremata.school.nz. Alternatively, if you have a child starting in 2025 and haven't yet enrolled, please contact the office so we can make sure you are on our system. Thank you.

Sunhats

Just a friendly reminder that sunhats are compulsory in Term 4. We have school hats available for sale at the office for \$15.00.

Teacher Only Day – School Closed

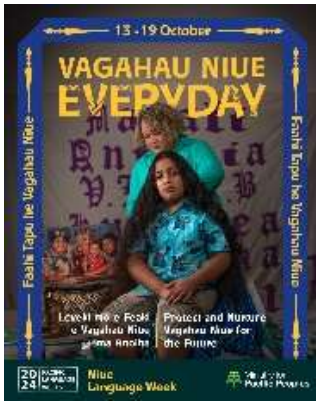
There is a Teacher Only Day on **Friday, 15th November** where the school will be closed for instruction. This day is for assessment and report moderation. Thank you for your support with this.



Raffle Ticket – Fundraising

Thanks to all the families who have been selling the raffle tickets in the holidays. Can you please bring in the sold tabs and money to the office. If you would like more to sell, please collect these from the office.

Fakaue lahi – Matua Bryce



Niuē Language Week

This year's theme for Faahi Tapu he Vagahau Niuē is **Leveki mo e Feaki e Vagahau Niuē ma Anoiha - Protect and Nurture Vagahau Niuē for the Future.**

Vagahau Niuē has been registered with UNESCO as an endangered language, so one of the challenges is the preservation of Vagahau Niuē and Niuē culture.

PAREMATA SCHOOL RAFFLE TICKETS

Thank you to everyone in the school community who are supporting our school raffle. Please return the tabs and money to the office. Money can also be paid directly into our bank account 12 3254 0048796 00 with raffle as the reference. The raffle will be drawn on Monday 4th November.



Only \$2.00 per ticket with great prizes

1st prize - \$1,000 New World Voucher



Thank you to **Rainbow Creative** for their support

ENTERTAINMENT PUBLICATIONS

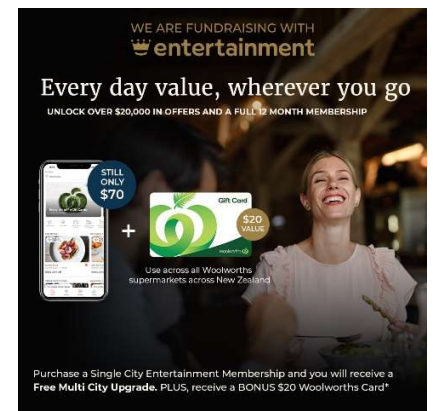
Looking for ways to save on the cost of living? An Entertainment Membership is the perfect solution whilst supporting our fundraiser! Purchase a Membership today and not only will you unlock up to \$20,000 in savings, but you will also:

- **Save \$50 with a BONUS Multi City Membership Upgrade**
- **Save \$20 with a BONUS \$20 Woolworths eGift Card***

Hurry, this offer is only available for a limited time:

Order Here

- <https://subscribe.entertainmentnz.com/fundraiser/104u135>



YEAR 7 IMMUNISATIONS

Our public health registered nurses are coming to your school in the week starting 02 December 2024 to provide immunisation for the Year 7 (and in some cases year 8) tamariki who have returned their immunisation form giving consent.

- If you have changed your mind or your situation has changed, please contact us at res-immunisation@huttvalleydhb.org.nz, or call us on 04 587 2949
- If you have not yet consented, but want to, please collect a consent form from the school office or contact us on 04 587 2949
- If you declined the vaccines last year but you have changed your mind and you now want your year 8 child to receive the vaccine(s) please collect a consent form from the school office or contact us on 04 587 2949
- If you have any questions or concerns, please contact us at res-immunisation@huttvalleydhb.org.nz, or call us on 04 587 294





Prize giving this Monday 21st October @ 6pm in the school hall.

Team Photos are on Tuesday, 5th November before school from 8:00am in the library. All uniforms need to be worn and then handed back after the photos.



SAUSAGE SIZZLE – Every Wednesday - \$2.00 each

HAMBURGERS – Every Friday – \$5.00 each



JUNIOR CRICKET

PORIRUA CITY JUNIOR
CRICKET CLUB



Boys and girls

- New entrants to Year 8 (Girls to Year 11)
- Soft ball and hard ball grades
- Have fun, develop skills, love cricket 🏏
- More information via
<https://www.facebook.com/pcjcc>
- **Open Day Mana Indoor Nets Saturday 19 October 11-2 – Blaze Players attending**



ATAREIRA
Mental Health & Addictions Support for
Family Whānau
Transitional Housing

Free Mental Health and Addictions Workshop

Date: Thursday 14 November 2024

Time: 9.45 am – 3.15 pm

Cost: No cost (Lunch included)

Venue: Boulcott Farms Conference Centre, 33 Military Road, Lower Hutt (parking on site)

Topics and Speakers

Neurodiversity in Women and Girls: What Does It Look Like and How Can It Be Supported?

Neurodiverse conditions, such as ADHD and Autism, were previously thought to predominantly affect males. This talk will delve into this shift in our understanding of neurodiversity and outline how neurodiverse young women can be recognised and supported to flourish, including via the process of psychological assessment and intervention. **Dr Hannah Hawkins-Elder** is a Clinical Psychologist working at the Porirua Child and Adolescent Mental Health Service (CAMHS). A significant part of her work involves providing psychological assessment for Autism and ADHD, and subsequently supporting the young person and their family to understand their neurodiversity and access the strategies and supports they need to thrive.

The Secret Keeper – Embracing Uncomfortable Spaces

Awarded a New Zealander of the Year award for her work, **Catherine Daniels** is starting important conversations needed to help others navigate their own journeys of healing through childhood trauma, parental neglect, sexual abuse, and mental health issues. Unable to verbally portray what had been trapped inside for 40 years, she has created over 70 sculptures and written a book, "The Secret Keeper." Catherine was a keynote speaker for the IIMHL Conference in Christchurch and been involved in the Royal Commission Inquiry of Abuse in Care.

Mental Health Service Delivery within the Department of Corrections

Samantha Grounsell, Senior Advisor – Mental Health Quality and Practice Team, is a registered nurse with over 10 years of mental health experiences, including 2.5 years with The Dept of Corrections. She will provide an overview of how mental health services are delivered within the New Zealand correctional systems. Samantha will also share key findings from Te Ara Tika - a recent review of these services. **Terry Huriwai** is a Probation officer by trade but has worked in various roles in the Addiction sector for a long, long time. He's been back working in Corrections for the past four years and is based in the Addiction Services team. Terry will talk about the development of a 'fit for purpose' standardised outcome measure and uniform process to help track programme effectiveness and support recovery.

Working with Refugees and Asylum Seekers

Immigration New Zealand resettles former refugees through several different visa categories, the main one being our quota programme, which is a 5-week residential programme based in Auckland. RASNZ is the onsite mental health service, and we also have clinical, cultural, and youth teams based in the community. Lynda will talk about the refugee journey, typical mental health presentations, working with cultural diversity and interpreters, and the resettlement process in the regions. **Lynda Crisford** is a psychologist and currently works as the Clinical Director of Refugees as Survivors NZ (RASNZ), overseeing the clinical services.